



**2024-2025  
SEASON**

**BOWLUSCENTER.ORG • 620.365.4765**



Dear Friends,

Welcome to the Bowlus 60th Anniversary Season. This milestone season is filled with incredible artists and performances that will leave indelible memories for those who sit in the Bowlus seats. It all starts with our Gala concert on September 14th featuring, *ABBAMANIA*, one of the best ABBA tribute bands.

Those that came for the almost sold-out performance of *Dinosaur World Live* last season, will want to come back to experience *Dragons and Mythical Beasts*. And when you want to see a tribute to Elton John, *Remember When Rock Was Young* featuring *Craig A. Meyer* is the Tribute you do not want to miss. The recital series will also be rocking with the incredible *TAKE3* trio playing Bach to Rock. Did I mention the well known animal behaviorist and Autism spokesperson, *Temple Grandin* is coming as part of the speaker's series?

Please look at the full season announced in this brochure and consider becoming a season subscriber to one or more of our series. There is a lot to celebrate. Come help us create more memories and launch the next 60 years.

Experience the Bowlus and live the arts LIVE.

Daniel Kays, Executive Director



## GALA CONCERT



**9.14.2024 @ 7 PM**

The Cast that performed for *Mama Mia*  
With Special Guest  
**NIGHT FEVER/BEE GEES & ADELE**

*Tickets on Sell Monday, August 12th!*

**\$30 ORCHESTRA**

**\$20 BALCONY**

*Abbamania* and *Night Fever* have been touring for the last 20 years and will take you back in time when Abba and The Bee Gees ruled the pop music world. Special guests for this show are Angela Seeger as the incredible *Adele*.



**Special Appearance by:**  
**Tom the Mime**  
as seen on TikTok & Facebook!



# SEASON SPONSORS



# MEDIA SPONSORS



# SERIES SPONSORS



# PERFORMANCE SPONSORS



Dr. Richard & Jan Knewton

# RECITAL SERIES SPONSORS

- Ryan Coffield, D.D.S
- Hofer & Hofer & Associates, Inc.

# FAMILY SERIES

Seen at the Bowlus in 1984 and back for its anniversary production "50 Years"

*MUMMENSCHANZ* will be taking audiences on a journey filled with imagination and poetry, putting on the most beloved sketches from the foundation's repertoire over the past five decades.

11.19.24 @ 7 PM

## MUMMENSCHANZ 50 YEARS



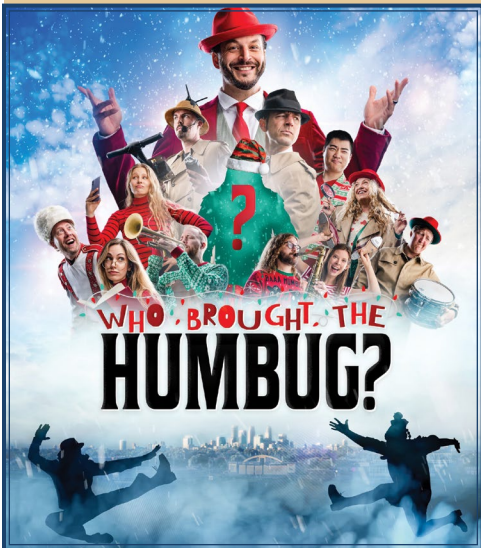
## DRAGONS AND MYTHICAL BEASTS



From the creators of the international smash hit, *Dinosaur World Live*. Calling all brave heroes! Enter into a magical world of myths and Legends in this fantastical show for all the family. Unveil a myriad of dark secrets and come face to face with some of the most magnificent monsters and terrifying beasts ever to walk the earth.

2.23.25 @ 4 PM

## WHO BROUGHT THE HUMBUG?



Come wearing your *Ugliest Christmas Sweater* & join us for one wildly-creative, interactive, holiday show the whole family can enjoy! It's a holiday spectacular that's jam-packed with high-energy music, Broadway-style theatrics, special guests, and out-of-this-world tap dancing.

12.14.24 @ 7 PM

*Mansion of Dreams* is the crowning achievement of the multi-award-winning Master Illusionist Rick Thomas. Stunning magic, extreme comedy, exquisite dancers and an inspiring story are woven into one of the most amazing productions ever to be seen on stage and television today!

3.8.25 @ 7 PM

## ILLUSIONIST RICK THOMAS MANSION OF DREAMS





# MUSIC SERIES

*In The Spirit of Lennon* is an intimate tribute to John Lennon. Drew Harrison & Tommy Cosentino capture the intensity and delicate honesty that Lennon brought to the Beatles music, and later to his own post-Beatles creations.

## IN THE SPIRIT OF LENNON



**9.21.24 @ 7 PM**

## REMEMBER WHEN ROCK WAS YOUNG - THE ELTON JOHN EXPERIENCE

STARRING CRAIG A MEYER



*Remember When Rock Was Young—The Elton John Experience* is a full stage experience like you've never seen before! Capturing the music, costumes and charisma of Sir Elton John, this show leaves audiences gasping for breath from all the fun they've had!

**4.12.25 @ 7 PM**

## CHLOË AGNEW

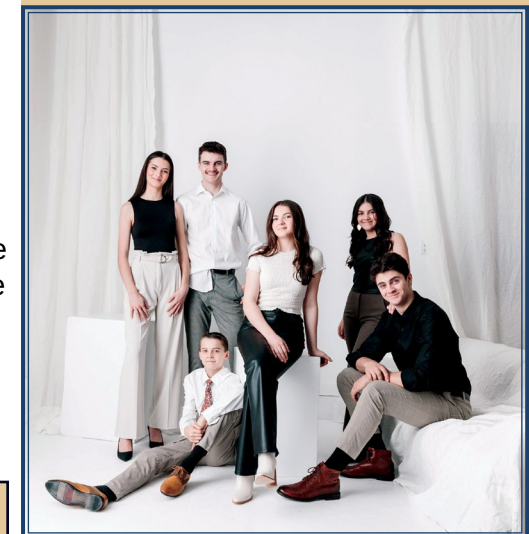


*Chloë: Reimagined* is an engaging evening of songs and stories from the Emerald Isle which blends Irish and Celtic folk & contemporary songs, some light classics, Broadway hits and Old School Hollywood, all performed with a Celtic twist. Chloë shot to fame with the World Famous group, Celtic Women.

**10.12.24 @ 7 PM**

The *Next Generation Leahy* play the music of their Irish heritage. Ranging in age from 9 -18, their live performances are filled with the high-energy, infectious Celtic-based music people associate with the Leahy heritage as was seen on our stage in 2005 with the original *Leahy*.

## NEXT GENERATION LEAHY



**5.3.25 @ 7 PM**



# SLEEPER SPEAKER SERIES

NATIONAL GEOGRAPHIC LIVE

## PENGUINS OF ANTARCTICA



Journey to bottom of the world with ecologist and *National Geographic* Explorer Dr. Heather Lynch to see how penguins, whales, and other wildlife thrives in one of the most remote regions of the planet.

10.18.24 @ 7 PM

Dr. Grandin became a prominent author and speaker on both autism and animal behavior. HBO made an Emmy Award winning movie about her life & she was inducted into the American Academy of Arts and Sciences in 2016.

2.7.25 @ 7 PM

## TEMPLE GRANDIN



Founder and CEO of Get Lit - Words Ignite tells the story of the origins of Get Lit, and how she used spoken word poetry to amplify the voices of thousands of youth from all over the world and realize her own greatest calling in the process.

2.28.25 @ 7 PM

## DIANE LUBY LANE



# RECITAL SERIES

## CAVATINA DUO



*The Cavatina Duo* infuses new sounds and emotional depth into their performances, providing audiences with an electrifying and unique musical experience that resonates globally.

10.15.24 @ 7 PM

Where Rock Meets Bach With a flair for the wild and unexpected, the genre-defying trio, *TAKE3*, brings the refinement of a rigorous classical music background and infuses it with rock-star charisma.

3.6.25 @ 7 PM

## TAKE3



## BRIDGE AND WOLAK



*Bridge & Wolak* are a globe-trotting musical duo. Michael Bridge, accordion, and Kornel Wolak, clarinet, share a love of classical, jazz and world music, a fascination with fusing genres and a passion for performance.

4.24.25 @ 7 PM



# RAISE THE CURTAIN

Please consider making a donation to our Annual "Raise the Curtain Fund." Financial contributions are vital to the success of the Bowlus Fine Arts Center and our ability to facilitate national and international touring acts, as well as providing a space for our local community to gather for drama, music, dance, and arts education. Earned revenues cover less than 20% of the program & operation costs. Your contribution goes a long way to continually "Raise the Curtain" for any event taking place within our doors.

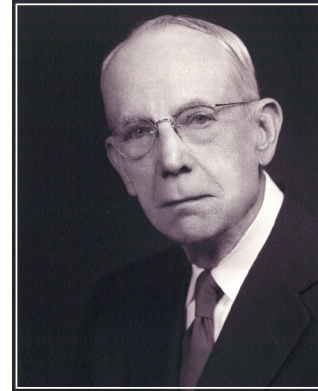
The following levels of Giving are recognized in the show programs for any Bowlus presented performance.

**BRAVO! \$1,000+**  
**STANDING OVATION \$500—\$999**  
**STANDING ROOM ONLY \$250—\$499**  
**APPLAUSE \$100—\$249**  
**CURTAIN RAISER \$50 - \$99**



\*\*\*Bowlus Fine Arts and Cultural Center is a 501(c)3 charitable organization and all gifts are tax deductible. A printed receipt acknowledging your gift will be mailed to the address provided.\*\*\*

## BOWLUS HISTORY



The Bowlus Center is a Testamentary Charitable Trust. In 1960, Iowa citizen and banker Thomas H. Bowlus wrote a will directing that his estate be used to build and equip a fine arts center. The mission of the center is defined in the will as "to broaden the cultural background of area youth and make available to the citizens of the area facilities, programs and entertainments not otherwise available."

The Center opened its doors in the fall of 1964, with Kansas City Mayor, H. Roe Bartle as the featured speaker at the grand opening and dedication. A few weeks later the Kansas City Philharmonic performed the first major concert in the new auditorium. Since its opening, the Bowlus Center has become an organization of regional significance and a sought after venue for touring artists.

During the years since 1964, thousands of people have performed at the Bowlus Center. Entertainers of all kinds, from the world famous to the kids next door, have presented their talents for area audiences. Among the artists who have performed on the Center's stage are such luminaries as Count Basie, Henry Mancini, Hal Holbrook, Minnie Pearl, Marcel Marceau, and a host of others.

In his will, Mr. Bowlus expressed the hope that the fine arts center would be a facility of which the citizens and, most particularly, the youth could be proud. He might be pleased to know that his visionary gift continues to bring cultural enrichment and fun to new generations of area youth and a multitude of citizens who never knew him.

We are honored to celebrate 60 years of Mr. Bowlus' vision and look forward to continuing his legacy for years to come!

# TICKET INFORMATION

## MUSIC SERIES

### Series Pricing

- Orchestra Adult: \$81/seat
- Orchestra Student: \$63/seat
- Balcony Adult: \$57/seat
- Balcony Student: \$39/seat

### Single Ticket Pricing

- Orchestra Adult: \$27/seat
- Orchestra Student: \$21/seat
- Balcony Adult: \$19/seat
- Balcony Student: \$13/seat

## FAMILY SERIES

### Series Pricing (ALL SEATING AREAS)

- Adult: \$57/seat
- Student: \$42/seat

### Single Ticket Pricing (ALL SEATING AREAS)

- Adult: \$19/seat
- Student: \$14/seat

## SLEEPER FAMILY TRUST SPEAKER SERIES

### Series Pricing (ALL SEATING AREAS)

- Adult: \$41/seat
- Student: \$24/seat

### Single Ticket Pricing (ALL SEATING AREAS)

- Adult: \$17/seat
- Student: \$10/seat

## RECITAL SERIES

### Series Pricing (General Admission)

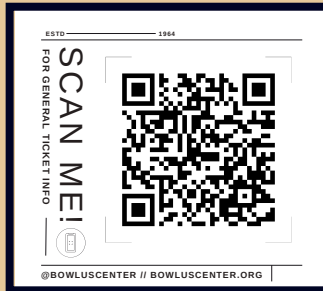
- Adult: \$36/seat
- Student: \$24/seat

### Single Ticket Pricing (General Admission)

- Adult: \$15/seat
- Student: \$10/seat



**SERIES TICKETS GO ON SALE TO THE PUBLIC  
MONDAY, AUGUST 12TH**



**SCAN QR CODE ABOVE,  
VISIT BOWLUSCENTER.ORG,  
OR CALL 620.365.4765 TO PURCHASE TICKETS**

**SINGLE TICKETS GO ON SALE TO THE PUBLIC  
MONDAY, SEPTEMBER 2ND**



**BOWLUS FINE ARTS CENTER**  
205 E. MADISON AVE.  
IOLA, KS 66749



*Come & Celebrate With Us!*